

Disney's BEAUTY AND THE BEAST

We will be using these rehearsal tracks for your audition.
Read the notes on your sheet music if you do not start at the
beginning of the song.

Rehearsal Tracks found here!



(<https://player.mtishows.com/rehearsal>)

Scroll down + enter code
~~Use the Code on the right hand side~~ under STREAMING:

BEA2625606

Track will begin at 4:10
BEAUTY AND THE BEAST

122
Belle

50 51 52 53 [To 74]

Home should be where the heart is Nev-er were words so true My heart's

74 75 76

far far a - way Home is too... What I'd

More resolutely

78 79 80 81

give to re - turn to the life that I knew late - ly And to

82 83 84 85 86

think I com - plained of that dull pro - vin - cial town Is this

Broader
a tempo - poco appassionata

87 88 89 90

home? Am I here for a day or for - e - ver? Shut a -

91 92 93 94 95

way from the world un - til who knows when Oh, but

Pushing ahead
a tempo

95 96 97 98

then as my life has been al - tered once, it can change a - gain

poco a poco rit. e dim.

99 100 101 102

Build high - er walls a - round me Change ev - 'ry lock and key No - thing

Meno mosso
ritard

103 104 105 106 107 108

lasts No - thing holds all of me My heart's far, far a - way Home and

a tempo poco ritard

109 110 111 112

free

#7 - Is This **Home?**

Beast Addition

#8B - HOW LONG MUST THIS GO ON?

Agitato

Singing begins about 8 seconds in

How long must this go on?

This cru-el trick of fate I sim-ply made one care-less, wrong de-ci-sion

And then that witch was gone, And left me in this state.

An ob-ject of re-vul-sion and de-ri-sion

Ha-ted! Is there no one who can show me how to

win the world's for-give-ness?

[Petal falls]

[To 168]

Gaston Audition

Track time: 1:38
(gives you 4 beats)

43 44 45 46

Each one stuffed with ev - 'ry Gas - ton gene _____ You'll be

I'm not hear - ing this!

47 48 49 50

keep - ing house with pride Each day gra - ti - fied that

Just in - cred - i - ble! So un - wed - da - ble!

51 (GASTON) 52 53 54

you are part of this i - dyl - lic scene

55-70 [Dialogue] 16

71 72 73 74

I can see that we will share all that love im - plies

75 76 77 78 79

We shall be the per - fect pair Rath - er like my thighs You are face to

80 81 82 83 84 85

face with des - ti - ny! All roads lead to... The best things in

86 87 88 89 90

life are... All's well that ends with me Es -

91 92 93 94 95

cape me? There's no way Cer - tain as Do, Re... Belle, when you

96 97 98 99 100 101 102

mar - ry mel -

- Me

Lumiere

#9 - BE OUR GUEST

Freely - In 2 8

9 10 11 12 (LUMIERE)

Be our

13 14 15 16

guest Be our guest Put our ser-vice to the test He a

17 18 19 20

nap-kin 'round your neck cher-ie and we'll pro-vide the rest Soupe du

21 22 23 24

jour hot hor d'oeuvres Why we on-ly live to serve Try the

25 (CHIP) 26 (LUMIERE) 27 28

grey stuff It's de-li-cious Don't be-lieve me? Ask the dish-es They can

29 (LUMIERE) 30 31 32

sing They can dance Af-ter all, Miss, This is France! And a

(M1-2
M3-4 F1-2
M11-12 R3-4, 11-12)
mp

Ha

33 34 35 36

din-ner here is ne-ver se-cond best Go on, un-

37 38 39 40

fold your men - u Take a glance and then you'll be our

41 42 43 44

guest Ouil our guest Be our guest Beef ra -

(M1-3,11-12;
F1-3,4,7,9,11-12,
CHIP,LUMIERE)

mf

With a lilt $\text{♩} = 108-112$

45 46 47 48 (LUMIERE)

gout Cheese souf - flé Pie and pud - ding "en flam - bé" We'll pre -

49 50 51 52

pare and serve with flair a cul - i - nar - y ca - ba - ret! You're a -

53 54 55 56

lone and you're scared but the ban - quet's all pre - pared No - one's

(M1, 5-7, 12, CHIP
M2, 8, 11 F1-2
mp M3-4 F3, 7
F4, 9, 11-12)

Hoo

57 (LUMIERE) 58 59 60 (M1-8,11-12;
F1-3,4,7,9,11-12,
CHIP)

gloo-my or com - plain-ing while the flat-ware's en - ter - tain-ing We tell

61 (LUMIERE) 62 63

jokes I do tricks with my fel - low can - dle -

#9 - Be Our Guest

Beauty and the Beast

Beauty and the Beast IR

9 **MRS. POTTS:**

Tale as old as time,

true as it can be.

13

Bare-ly e-ven friends, then some-bod-y

15

bends un-ex-pect-ed - ly. Just a lit-tle

18

change, small, to say the least. Both a lit-tle

21

scared, nei-ther one pre-pared... Beau-ty and the

~~(BELLE crosses to the BEAST and holds out her hand.)~~

~~BELLE: Dance with me.~~

~~BEAST: No... I~~

~~LUMIERE, COGSWORTH: Dance with her!~~

23

Beast.

26 (MRS. POTTS):

Ev-er just the same, ev-er a sur-prise.

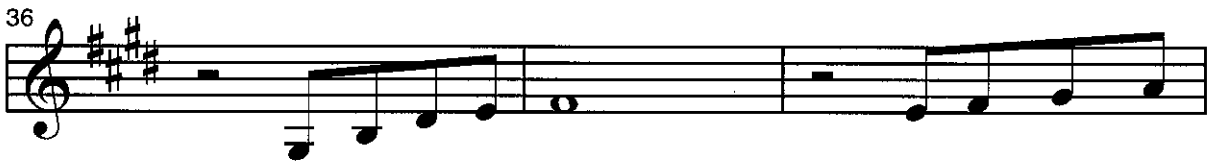


Ev-er as be-fore, ev-er just as sure as the sun will



rise.

Tale as old as time,



tune as old as song.

Bit-ter sweet and



strange... Find-ing you can change, learn-ing you were



wrong.

Cer-tain as the sun



ris - ing in the east. Tale as old as



time, song as old as rhyme... Beau-ty and the Beast.

stop



Tale as old as time, song as old as

Lefou Addition

#8 - GASTON

In 1 $\text{♩} = 73$ 12 [Dialogue begins] 16

2-13 14-29

30-45 16 46 *Track time 1:24* Vamp (LEFOU) (last time) Gosh it dis turbs me to

52 53 54 55 56 57 see you Gas - ton lock - ing so down in the dumps

58 59 60 61 Ev - 'ry guy here'd like to be you Gas - ton

62 63 64 65 ev - en when tak - ing your lumps There's

66 67 68 69 no man in town as ad - mir - ed as you You're

70 71 72 73 ev - 'ry - one's fa - vor - ite guy

74 *Freely* 75 76 77 78 Ev - 'ry - one's awed and in - spi - red by you and it's not ver - y

79 80 81 82 83 hard to see why No one's

E

a tempo

84 slick as Gas - ton No one's quick as Gas - ton No one's neck's as in -

89 cred - i - bly thick as Gas - ton For there's no man in town half as

94 man - ly Per - fect, a pure par - a - gon. You can

100 ask an - y Tom Dick or Stan - ley And they'll tell you whose

105 team they pre - fer to be on No one's

ritard (LEFOU/MEN/S.GIRLS)

110 been like Gas - ton A king - pin like Gas - ton. No one's got a swell

a tempo (LEFOU)

115 cleft in his chin like Gas - ton. As a spec - i - men, yes I'm in -

(GASTON)

120 tim - i - dat - ing My what a guy, that Gas - ton Give

M1,5,11
M2,6,7,9,12,LeFou,Silly Girls
M3,8
M4,10 (M1)
(M2-4)

126 five hur - rahs Give twelve "hip hips" Gas - ton is the

(SILLY GIRLS,
OTHER MEN - yelled)

(LEFOU)

131 best and the rest is all drips No one

rall. (M1-4)

#8 - Gaston

Human Again

Rehearsal
Track
15-16

Chip, Babette, Madame
Wardrobe

*Sing all parts
Regardless of Character

49

Track starts at 7:20

When we're hu-man a-gain,

52

on - ly hu - man a - gain, when we're

55

CHIP:

knick-knacks and what-nots no more... Lit - tle

59

push, lit - tle shove, they could, whoosh, fall in

62

MADAME:

love! Ah, che - rie, won't it all be top drawer?

66

BABETTE: MADAME:

I'll wear lip - stick and rouge, — and I

69



won't be so huge. — Why, I'll eas - i - ly

Detailed description: This block contains the first line of musical notation. It starts with a treble clef and a key signature of one sharp (F#). The melody consists of eighth and quarter notes. The lyrics are 'won't be so huge.' followed by a long horizontal line, then 'Why, I'll eas - i - ly'.

72

BABETTE:




fit through that door! — I'll ex - ude sa - voir

Detailed description: This block contains the second line of musical notation. It starts with a treble clef and a key signature of one sharp (F#). The melody consists of quarter and eighth notes. The lyrics are 'fit through that door!' followed by a long horizontal line, then 'I'll ex - ude sa - voir'.

**MADAME, MRS. POTTS,
CHIP, LUMIERE, BABETTE:**

76


MADAME:



faire. I'll wear gowns, I'll have hair! It's my

Detailed description: This block contains the third line of musical notation. It starts with a treble clef and a key signature of one sharp (F#). The melody consists of quarter and eighth notes. The lyrics are '*faire.* I'll wear gowns, I'll have hair! It's my'.

79



prayer to be hu-man a - gain. —

Detailed description: This block contains the fourth line of musical notation. It starts with a treble clef and a key signature of one sharp (F#). The melody consists of quarter and eighth notes. The lyrics are 'prayer to be hu-man a - gain.' followed by a long horizontal line.

Cogsworth

Rehearsal Track #15-16

Track starts at 7:20

a tempo $\text{♩} = 68$

55 56 57

hu - man a - gain on - ly hu - man a - gain When we're knick - knacks and

60 61 62 (CHIP) 63 64 65

what - nots no more Lit - tle push lit - tle shove They could whoosh fall in love!

Still gathering momentum $\text{♩} = 70-72$

(WARDROBE)

66 67 68 69 70 71

Ah, che - rie won't it all be top drawer? I'll wear lip - stick and rouge—

72 73 74 75 76

— and I won't be so huge— Why I'll eas - i - ly fit through that

pochiss. accel. poco a poco

77 78 79 80 81 82

door— I'll ex - ude sa - voir faire I'll wear gowns, I'll have hair It's my

poco più mosso

83 84 85 86 [To 115] 115 116 (COGSWORTH)

prayer to be hu - man a - gain. When I'm

Start

a tempo $\text{♩} = 74-76$

117 118 119 120 121

hu - man a - gain on - ly hu - man a - gain When the world once more

(Spoken)

122 123 124 125 126 (LUMIERE)

starts mak - ing sense I'll un - wind for a change Real - ly?

(COGSWORTH)

127 128 129 130 131

that - 'd be strange— Can I help it if I'm t - t - tense?

132 133 134 135 136

In a shack by the sea— I'll sit back sip - ping tea— Let my

137 138 139 140 141 *crusc.*

ear - ly re - tire - ment com - mence Far from fools made of

142 143 144 145 146 *ff mp*

wax I'll get down to brass tacks and re - lax when I'm hu - man a -

(+F2,6,8-10 [+OFFSTAGE ENSEMBLE - except M8]
BAB, WARD, LUM, POTTS, CHIP)

A bit easier $\text{♩} = 72$

147 148 149 150 (ALL - except M8)

gain So

STOP

151 152 153 154 155

sweep the dust from the floor Let's let some

(LUM, COGS, MEN
BAB, WARD, CHIP, WOMEN)

156 157 158 159 160

light in the room I can feel I can tell some - one

161 162 163 164 165 166

might break the spell an - y day now

167 (LUMIERE) 168 169 170 (BABETTE) 171

Shine up the brass on the door A - lert the

(LUM, COGS
F6,10, BAB, WARD, POTTS, CHIP)

172 173 174 175 176

dust - pail and broom If it all goes as planned our time

177 178 179 180 181 182

may be at hand an - y day now

Male Ensemble

Audition Song "Mob Song"

Start



Through the

(GASTON:)



mist Through the wood Through the dark-ness and the sha-dows It's a



night - mare but it's one ex - cit - ing ride Say a



prayer Then we're there at the draw-bridge of a cas - tle and there's



some - thing tru - ly ter - ri - ble in - side

STOP

~~It's a~~

* Rehearsal Track 19A-22.

Starts at 57 seconds

We will start track at 48 seconds
for an intro.

Female Ensemble

Rehearsal track starts 5 minutes into

BEAST Track 01-03 105 -

42 43 44 45 46

That's nice. Ma - riel The ba - guettes! Hur - ry up!

47 (F1, 5) 48 49 50

Look there she goes, the girl is strange, no ques - tion.

51 52 53 54 (F4, F8)

Dazed and dis - tract - ed, can't you tell? Nev - er

55 56 (M4, M5) 57 58 (F4, 8) (M4, 5)

part of an - y crowd, 'cause her head's up on some cloud. No de -

59 60 61 62

ny - ing she's a fun - ny girl, that Belle.

63 (M1) 64 (F10) 65 (M1) 66

- Bon - jour. Good day. How is your fam - ily?

67 (F6) 68 (M7) 69 (F6) 70

Bon - jour. Good day. How is your wife?

71 (F2) 72 73 (F1) 74 (BELLÉ)

I need six eggs! That's too ex - pen - sive There

75 76 77 78

must be more than this pro - vin - cial

79 [Bookseller scene] 80-94 15.

lifel

95-108 14 Safety 109a 109-110 2

lifel

#2 - Belle

[To 7]

Ev - ry

lit - tle

(D1)

same old

since the
[scene]

(M3)

norm - ing